

# TA-GAV



**Gate valves**  
DN 50-600



Engineering  
**GREAT** Solutions

# TA-GAV

Gate valve for heating, cooling and tap water systems. Available with flanges or grooved ends.



## Technical description

### Applications:

Heating and cooling systems  
Tap water systems

### Function:

Shut-off

### Dimensions:

DN 50-600

### Pressure class:

PN 16 and PN 25

### Temperature:

Max. working temperature: 120°C  
Min. working temperature: -20°C

### Media:

Water and neutral fluids, water-glycol mixtures.

### Material:

#### Flanged:

Body: Ductile iron EN-JS 1050  
Bonnet: Ductile iron EN-JS 1050  
Wedge: Ductile iron EN-JS 1050, EPDM coated  
Thrust collar: Brass C67400  
Stem nut: Bronze C62300  
Stem: Stainless steel BS970 420S37  
O-ring: EPDM  
Gasket: EPDM  
Gland: Ductile iron EN-JS 1050  
Handwheel: Ductile iron EN-JS 1050  
Gearbox: Carbon steel St3

#### Grooved:

Body:  
- Housing Ductile Iron EN-JS 1050  
- Trim Bronze EN1982 CC491K  
Wedge:  
- Trim Bronze EN1982 CC491K  
- Housing Ductile Iron EN-JS 1050  
- Nut Bronze EN1982 CC491K  
Stem: Stainless Steel BS970 420S37  
Bonnet: Ductile Iron EN-JS 1050  
Gasket: Graphite  
Stuffing: Box Ductile Iron EN-JS 1050  
Packing: Graphite  
Handwheel: Ductile Iron EN-JS 1050

### Surface treatment:

Internally and externally liquid epoxy painted or fusion bonded epoxy powder coated (FBE).  
Fusion bonded epoxy coating 150 -300 microns.

### Marking:

IMI, PN, DN, and flow direction arrow.

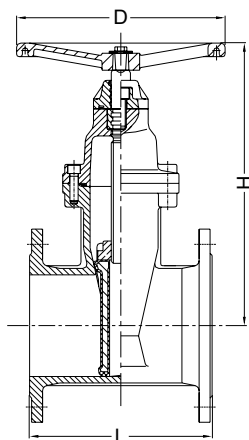
### Colour:

Blue RAL5015

### Connections:

Flanged: According to EN 1092-2  
Grooved ends: According to ISO 4200

## Articles - Flanged



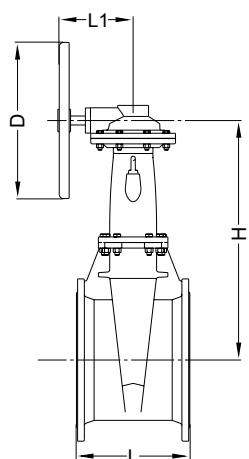
### Flanged Handwheel

#### PN 16

DN	L	H	D	Kvs	kg	EAN	Article No
50	178	240	175	40,7	15	5902276800573	42250-026250
65	191	255	175	64,6	17	5902276800580	42250-026265
80	203	280	255	94,0	20	5902276800597	42250-026280
100	229	305	255	162,8	26	5902276800603	42250-026290
125	254	380	305	254,4	33	5902276800610	42250-026291
150	267	417	305	366,3	46	5902276800627	42250-026292
200	292	525	355	651,1	70	5902276800634	42250-026293
250	330	621	405	1017,4	105	5902276800641	42250-026294
300	356	711	405	1465,0	159	5902276800658	42250-026295

#### PN 25

DN	L	H	D	Kvs	kg	EAN	Article No
50	178	240	175	40,7	15	5902276800481	42250-026350
65	191	255	175	64,6	17	5902276800498	42250-026365
80	203	280	255	94,0	20	5902276800504	42250-026380
100	229	305	255	162,8	26	5902276800511	42250-026390
125	254	380	305	254,4	33	5902276800528	42250-026391
150	267	417	305	366,3	46	5902276800535	42250-026392
200	292	525	355	651,1	70	5902276800542	42250-026393
250	330	621	405	1017,4	105	5902276800559	42250-026394
300	356	711	405	1465,0	159	5902276800566	42250-026395



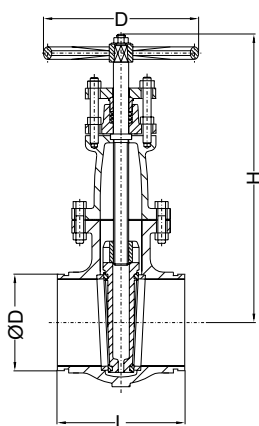
### Flanged Gearbox

#### PN 16

DN	L	L1	H	D	Kvs	EAN	Article No
350	381	330	905	460	1837,7	5902276800764	42250-126296
400	406	330	980	460	2437,9	5902276800771	42250-126297
450	432	330	1115	460	3122,8	5902276800788	42250-126298
500	457	400	1190	600	3876,5	5902276800795	42250-126299
600	508	400	1340	600	5666,3	5902276800757	42250-126200

Kvs = m<sup>3</sup>/h at a pressure drop of 1 bar and fully open valve.

## Articles - Grooved ends

**Grooved ends**

Handwheel

**PN 16**

DN	ØD	D	L	H	Kvs	kg	EAN	Article No
50	60	190	178	260	40,7	16	5902276800665	42250-029250
65 <sup>1)</sup>	73	190	191	276	64,6	20	5902276802744	42250-025265
65	76,1	190	191	276	64,6	20	5902276800672	42250-029265
80	89	190	203	300	94,0	24	5902276800689	42250-029280
100	114	250	229	355	162,8	38	5902276800696	42250-029290
125	139,7	305	254	409	254,4	50	5902276800702	42250-029291
125 <sup>1)</sup>	141,3	305	254	409	254,4	50	5902276802751	42250-025291
150	168	305	267	467	366,3	60	5902276800719	42250-029292
200	219	356	292	606	651,1	110	5902276800726	42250-029293
250	273	405	330	750	1017,4	200	5902276800733	42250-029294
300	324	457	356	835	1465,0	280	5902276800740	42250-029295

Kvs = m<sup>3</sup>/h at a pressure drop of 1 bar and fully open valve.

1) Not conforming to ISO 4200.